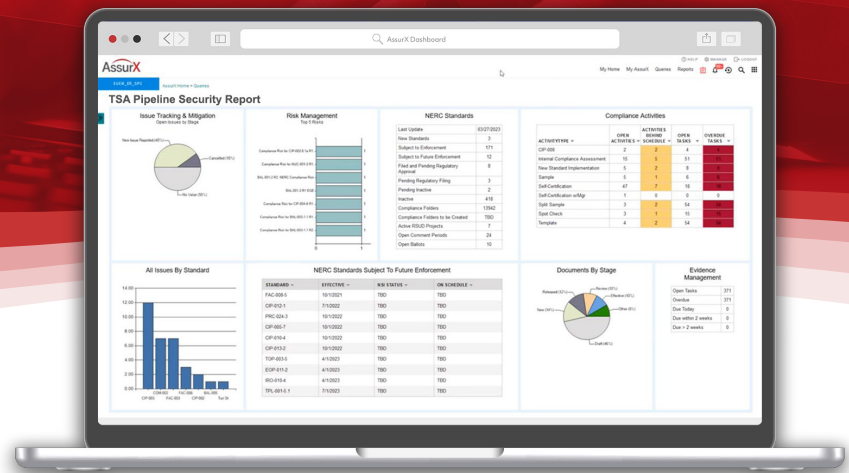


DATASHEET

AssurX TSA Pipeline Security Solution with ECOS



Streamline TSA Pipeline Compliance with Precision and Automation

AssurX ECOS software solution combines automation, scalability and advanced data management features to help Utility companies manage TSA Pipeline Security compliance and regulatory requirements while maintaining operational integrity. User-driven configuration with affecting source code to meet changing business requirements.

Includes customized executive dashboards to monitor key metrics and ensure continuous adherence to TSA guidelines using real-time data for intelligent decision-making. Template-driven workflows and automated evidence management ensure accurate and thorough documentation, making it easier to meet TSA requirements and prepare for audits.

Enhance your pipeline security and compliance efforts

Compliance Adherence to complex regulatory environments

Supports TSA-Pipeline-2001-02d requirements and other regional, federal and industry specific regulations.

Seamless integration and automated workflow optimization

Connect critical compliance data with operational risk management. Integrate with existing systems, data sources, and external platforms to enhance workflow management.

Scalable and Configurable Platform

Adapts to both small-scale and large-scale pipeline operations. Whether deployed on-premises or in the cloud, it provides a tailored approach to managing TSA compliance requirements.

Cybersecurity Integration

Aligns with industry-standard cybersecurity measures, integrating robust security protocols to safeguard sensitive data and operational integrity.

Efficient Resource Utilization

Automate compliance and risk management tasks to reduce resource expenditure and focus on strategic operational growth from evidence collection to incident reporting. Track, manage, and mitigate risks with sophisticated tools designed for TSA Pipeline Security.

Key Features:

- Dashboards with Business Intelligence for real-time compliance visibility.
- Integration with existing systems and data sources.
- Configurable workflows and automated processes.
- Advanced reporting tools and evidence management.