

## ASSURX NERC CYBER SECURITY (CIP) MANAGEMENT SOLUTIONS

AssurX, Inc., a leader in compliance management software, provides two cyber security management solutions to address the NERC Bulk Electric System (BES) Critical Infrastructure Protection (CIP) standards for Version 5 and beyond. These integrated solutions allow registered entities to manage their cyber systems and cyber assets as well as cyber access management.

### CIP System Management

AssurX CIP System Management solution provides the functionality for change control and configuration management for the high, medium and low impact BES cyber systems and cyber assets. The software solution ties the Physical Security Perimeter (PSP) and Electronic Security Perimeter (ESP) to the associated cyber system.

- Maintain and manage an inventory of cyber devices
- Manage baseline configuration of cyber devices
- Meet minimum requirements for evidence sufficiency for CIP assets
- Report historical changes to an asset over the asset's life-cycle
- Provide a single aggregated view of all organizational and regulatory related cyber assets with their appropriate classifications
- Schedule, monitor, and alert on time-based compliance requirement deadlines

### CIP Access Management

AssurX CIP Access Management solution provides the functionality for a registered entity to grant, modify, or revoke access for all individuals that need or have access to cyber systems. The access solution allows reports and metrics to be generated for access management.

- Grant, modify, or revoke a user's access to one or more systems and/or security perimeters
- Add one or more access changes to the access change request using the "User Access Register" feature
- Document managed user access by personnel risk assessment and CIP training dates
- Approve/reject signature required access changes by line item
- Generate an access change task record for each revoked CIP access change when signatures are requested
- Add one or more CIP users to a CIP access role

### KEY FEATURES

ESTABLISH A CENTRALIZED COMPLIANCE MGMT. SYSTEM

ROLE BASED SECURITY & PERMISSIONS

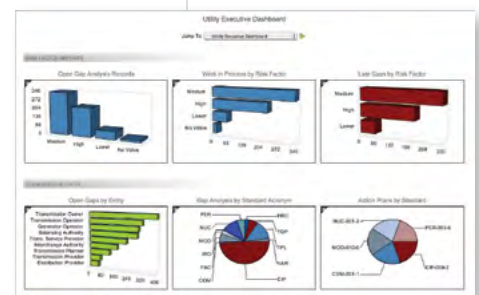
AUTOMATIC EMAIL NOTIFICATIONS UPON ACCESS CHANGE TASK

COMPREHENSIVE REVISION HISTORY OF ALL RECORDS

ADDRESS GAPS WITH MITIGATION PLANS & FOLLOW UP TASKS

AUTOMATED PERIODIC/SCHEDULED ACTIVITIES WITH REVIEWS & APPROVALS

SEAMLESS INTEGRATION WITH OTHER PROCESSES INCLUDING AUDITS, CORRECTIVE ACTION, CHANGE MANAGEMENT, DOCUMENT CONTROL, ETC.



## The Industry Solution From AssurX

The Energy & Utility Enterprise Management (EUEM) solution is a software system for managing key compliance and related business operations so issues can be centrally managed—from detection to corrective action, documentation and trend analysis. It tracks and coordinates activities, policies, procedures and documents, and improves business and compliance performance everywhere in the enterprise.

With EUEM, you not only immediately know when a potential issue arises, all relevant areas of the business share the information needed to contain, evaluate and resolve the problem. And, with its powerful analytical tools, companies can perform the detailed trend analysis needed to control risk exposure and prevent future problems.



### CORRECTIVE ACTION MANAGEMENT

Detect, correct and prevent recurrence of regulatory violations, procedural lapses, cyber incidents, equipment/test failures, and more with an integrated closed-loop system. Issues initiated from any department are investigated, root causes identified, and mitigation plans implemented across operations. Dashboards show current and potential problems, and automated alerts instantly notify the proper personnel.

### Other Standard Features

- Includes turnkey, industry best practice workflows and forms that are ready to use, or be easily modified, with point-and-click tools that require NO programming
- Secure, scalable system with built-in audit trail and electronic signatures
- Security permissions—limit who can login, view or edit records, etc.
- Easy to use ad-hoc query tools for creating, saving and exporting data
- Full integration to other processes (e.g., audits, CAPAs, change management, etc.)
- Integrate with any external system or database such as document control, work order, internally developed apps, databases, etc., using a flexible open integration interface

### About AssurX, Inc.

AssurX, Inc., provides highly regulated organizations with enterprise-wide quality management and compliance solutions. With a choice of OnDemand services or OnPremise (licensed) software delivery options, AssurX offers a flexible, comprehensive all-in-one solution that automates quality and regulatory compliance related processes so issues can be properly managed. It helps collect, organize, analyze and share information to better manage and improve quality and compliance performance everywhere in your enterprise.

AssurX, Inc.

18525 Sutter Boulevard

Suite 150

Morgan Hill, CA 95037

Tel 888.927.7879

Fax 408.776.1267

www.assurx.com

